

# SKANDA VALE

---

## Accommodation list 2026

---

This list of approved accommodation has been compiled to make it easier for pilgrims to find places to stay in the local area. As you may already know, we have very limited accommodation here at Skanda Vale, particularly during the summer months.

All the accommodation has been checked and verified as being suitable for pilgrims; this means that vegetarian food will be available, and there should not be any problems with pilgrims leaving early for the 5am puja. We would however like to remind pilgrims to leave quietly when attending the early pujas, so as not to disturb other guests.

Other unapproved local accommodation can be found by calling the Carmarthen Tourist Office on 01267 231557. The office is open seven days a week, between 10am and 5pm during the summer. During the winter they are open between 10am and 4pm, Monday to Saturday.

## FFERM-Y-FELIN

01267 253498 / 07961 218683 / [www.ffermyfelin.com](http://www.ffermyfelin.com) / SA33 6DA

### LOCATION:

Llanpumsaint. About 5 minutes drive from Skanda Vale.

### FACILITIES:

This is a four star farm guest house, with two self contained cottages – one of which is able to sleep 6, the other sleeps 4. All the rooms in the main house are ensuite with TV, towels, linen and tea making facilities.

### PRICES:

From £100 per night for 2 guests.

From £75 per night for 1 guest.

From £20 – £25 per night per child (under 12 years).

Dogs: £20.00 per dog per night.



## SIRAMIK B&B

01559 384292 / 07866 000326 / [www.siramik.co.uk](http://www.siramik.co.uk) / SA32 7DY

### LOCATION:

Pontarsais - about 10 minutes drive from Skanda Vale.

### FACILITIES:

Four star accommodation with 4 twin-bed rooms. Two rooms are en-suite, one with adapted bathroom facilities for people with disabilities. The family room shares the en-suite. All rooms have coffee and tea making facilities, TV, towels and bed linen. No children under 12 years old.

### PRICES:

£45 per person per night for accommodation only.

£52.50 per person per night with breakfast (incl. vegetarian).



## RED KITE COTTAGE

07815 704736 / [www.redkitecottage.co.uk](http://www.redkitecottage.co.uk) / SA32 7AG

### LOCATION:

Peniel. About 14 minutes drive from Skanda Vale.

### FACILITIES:

This is a five star self catering cottage that sleeps up to five people in two bedrooms. Accommodation features a large lounge with TV and DVD, a full kitchen, separate bathroom and sun deck with views over the surrounding countryside.

### PRICES:

- Prices from £70 per night for up to maximum of 5 guests (subject to length of stay and season)
- £495 - £850 per week , open throughout the year.
- Single nights from £160 - £200 subject to season and availability.



---

## THE COACH HOUSE ANNEXE

[Book on Airbnb](#)

---

### LOCATION:

Alltwalis. 5 miles from Skanda Vale.  
15 minutes drive.

### FACILITIES:

Sleeps 4 - 2 bedrooms - 2 beds  
A centrally-heated annexe with fully functional kitchen (should you wish to cook for yourself) complete with a dishwasher, fridge, oven, hob, microwave, washing machine and drier. A snug lounge area awaits with a 40" flat screen TV, BluRay DVD player and Wifi included. Sole use of garden with gas BBQ provided.

Transport to and from Carmarthen train station, and Skanda Vale is also available at £10 per journey.

### PRICES:

From £49 per night.



## BLAENGWEN BACH

07818 084725 / [dorismerkldavies@gmail.com](mailto:dorismerkldavies@gmail.com) / SA39 9HP

### LOCATION:

Pencader. 6 miles from Skanda Vale.  
15 minutes drive.

### FACILITIES:

A self-contained annex providing self-catering accommodation on an organic regenerative farm. Sleeps 4 people. Living room with sofa bed sleeping two, a double bedroom, a fully equipped kitchen with microwave and coffee machine, plus bathroom with shower. Near the A485, yet providing a quiet, rural experience in the middle of the countryside. TV with Netflix and Amazon Prime, and WiFi. Bed linen, towels and tea towels provided.

### PRICES:

From £60 per night (depending on season).  
20% discount for stays over a week.



## LARK HILL TIPIS

01559 371581 / 07875 828890 / [www.larkhilltipisandyurts.co.uk](http://www.larkhilltipisandyurts.co.uk) / SA33 6AT

### LOCATION:

Cwmduad. About 19 minutes drive from SV.

### FACILITIES:

Self-catering glamping accommodation. Ideal for groups and families. Guests need to bring bedding, towels and a torch (Bedding can be supplied at the additional cost of £20 per stay).

### PRICES:

#### Tipi/Lavvu – 4 people

Nightly midweek rate: £85

Friday and Saturday Night: £190

#### Yurt – 4 people

Nightly midweek rate: £95

Friday and Saturday night : £240

#### Alachigh – 6 people

Nightly midweek rate: £105

Friday and Saturday night: £280

10% of the booking fee will be donated by Larkhill to Skanda Vale Hospice.  
Please let us know you are visiting Skanda Vale while making the booking.



---

## OLD SCHOOL B&B – ADULTS ONLY

07748 594599 / SA39 9BS / [oldschoolbandb.co.uk](http://oldschoolbandb.co.uk) / [info@oldschoolbandb.co.uk](mailto:info@oldschoolbandb.co.uk)

---

### LOCATION:

Approximately 6.5 miles or 20 minutes drive from Skanda Vale.

### FACILITIES:

Award-winning, four-star eco-B&B with five en-suite rooms (3 doubles, 2 singles) for up to 8 adults. Facilities include self-check-in, on-site parking, and a vegetarian continental breakfast. All rooms feature power showers, toiletries, tea/coffee, TV, and Wi-Fi; Room 1 has a private outdoor area. Adults only; no pets.

### PRICES:

room 1 - 2 people from £90

room 2 - 2 people from £82

room 3 - 2 people from £82

room 4 - 1 person from £72

room 5 - 1 person from £70



---

## WAUNWTHAN COTTAGE

07930 917713 / 01559 372318 / [www.waunwthan.co.uk](http://www.waunwthan.co.uk) / SA44 5EJ

---

### LOCATION:

Saron, Llandysul. 9 miles, 21 minutes from Skanda Vale.

### FACILITIES:

2 high quality en suite bedrooms, each sleeping 2 people. Neither room is set up as a family room so unfortunately we cannot accommodate children. Both rooms have Freeview TV, hairdryer, and tea/coffee making facilities. Breakfast is included.

### PRICES:

Prices per room per night for two people: £80.  
Offers are available for two nights or more.



---

## THE IVY BUSH ROYAL HOTEL

01267 235111 / [www.ivybushroyal.co.uk](http://www.ivybushroyal.co.uk) / SA31 1LG

---

### LOCATION:

Carmarthen. About 21 minutes drive from Skanda Vale.

### FACILITIES:

This is a three star hotel with 70 ensuite rooms. All the rooms have telephones, satellite TV, hairdryers and tea making facilities. Families are welcome, and there is the potential to accommodate coach groups.

### PRICES:

Bed & breakfast, single room from £77.  
Bed & breakfast, double room from £99.  
Bed & breakfast, family room from £130.



---

## LLAINDDU FARM COTTAGE

01559 371369 / [www.llainddu-farm.co.uk](http://www.llainddu-farm.co.uk) / SA33 6AU

---

### LOCATION:

Cwmduad. About 22 minutes drive from Skanda Vale.

### FACILITIES:

Detached self-catering holiday cottage located in stunning countryside. Benefits from secluded location with private parking, central heating, TV, DVD, free broadband and fully equipped kitchen. Four bedrooms sleep up to 7 adults in comfort, although extra provision can be made for larger groups visiting the temples.

### PRICES:

Single nights and longer stays are available. Prices start from £160 per night for up to 7 people.



## RHIWIAU SELF CATERING

01267 253355 / [rhiwiau.cymru](http://rhiwiau.cymru) / SA32 7JH

### LOCATION:

Llanllawddog. About 22 minutes from Skanda Vale.

### FACILITIES:

Very comfortable converted barn, sleeps five with two bedrooms – but, please, no more.

Bedroom One: (upstairs) one king size bed.

Bedroom Two: (ground floor) one bunk bed.

A further single bed can be added to either bedroom.

Ground floor kitchen, sitting room, wetroom, toilet and utility room with washing machine.

Central heating. Self catering.

### PRICES:

£76.50 per night for one or two people – non refundable rate. An additional £20.00 for each extra person up to a maximum of five.

Minimum stay is three nights.



---

## THE BOAR'S HEAD HOTEL

01267 222789 / [www.boarsheadhotel.net](http://www.boarsheadhotel.net) / SA31 3AE

---

### LOCATION:

Carmarthen. About 23 minutes drive from Skanda Vale.

### FACILITIES:

This is a three star hotel with restaurant and bars. All the rooms are ensuite with telephone, TV and tea making facilities. Families are welcome, and there is level access for elderly and disabled guests.

### PRICES:

Bed & breakfast, single room from £48.

Bed & breakfast, double room from £60.

Bed & breakfast, family room from £90.



## CAMBRIAN COTTAGES

07786 626010 / [www.cambriancottages.com](http://www.cambriancottages.com) / SA39 9BL

### LOCATION:

Gwyddgrug, 23 minutes from Skanda Vale.

### FACILITIES:

We have three luxury self-catering holiday apartments which can be booked individually or together, depending on availability:

- Y Lofft Wair – 2 bedrooms, up to 4 guests.
- Y Lofft Stabl – 2 bedrooms, up to 4 guests.
- Y Cwt Mochyn – 1 bedroom, up to 2 guests.

Each apartment has a fully equipped open plan kitchen / living / dining area, spacious shower room and a garden and / or seating area. We provide bed linen and towels, as well as Freesat and Disney+ TV and good Wi-Fi.

### PRICES:

1 bed £ 80 / night + £ 18 cleaning fee

2 bed £ 120 / night + £ 18 cleaning fee

Minimum 2-night stay



## GILFACH WEN BARN

01267 240077 / 07780 476737 / [www.brechfa-bunkhouse.com](http://www.brechfa-bunkhouse.com) / SA32 7QL

### LOCATION:

Brechfa. About 27 minutes drive from Skanda Vale.

### FACILITIES:

Holiday cottage designed for large groups and families, with seven family size bedrooms. Large lounge, dining room and fully equipped kitchen. Large groups can book the accommodation for sole use.

### PRICES:

Friday, Saturday & during School Holidays:  
Minimum advance booking for groups of 20 people, staying minimum 2 nights – £20 pppn.  
Bookings by smaller groups or single night stays accepted no more than 3 weeks in advance, if space available.  
Mid week during school term: No minimum number of people or nights – £17.50 pppn.



## MOELFRYN CARAVAN PARK

01559 371231 / [www.moelfryncaravanpark.co.uk](http://www.moelfryncaravanpark.co.uk) / SA38 9JE

### LOCATION:

Newcastle Emlyn. About 28 minutes drive from Skanda Vale.

### FACILITIES:

Self catering static caravans with three bedrooms. Master bedroom with double bed, second and third bedrooms with two single beds each. Bathroom with shower, full kitchen, dining area and lounge. Please bring your own sheets, duvet covers and towels. Sorry no pets allowed.

### PRICES:

Weekend breaks start from £125 for two people.



---

## DERWEN COTTAGE

01267 202725 / [www.derwencottageholidays.co.uk](http://www.derwencottageholidays.co.uk) / SA32 7BH

---

### LOCATION:

Brechfa. About 30 minutes drive from Skanda Vale.

### FACILITIES:

Self catering holiday cottage – ideal for 4 adults and 4 children or 3 couples, set in a beautiful, secluded valley; with its own garden, access to a waterfall, and 20 acre Nature Reserve. Lounge, dining room and fully equipped kitchen. All towels and linen are provided. Wifi. Onsite wood-fired sauna available.

### PRICES:

Prices vary throughout the year and standard bookings (weekend, midweek, and full week) are available on our booking page. We no longer offer one night bookings. Non standard 2-3 nights mid week bookings can be made by arrangement, if the cottage is available.



## BRONHAUL FARM COTTAGES

01267 211303 / [www.bronhaulfarm.co.uk](http://www.bronhaulfarm.co.uk) / SA33 5NQ

### LOCATION:

Bancyfelin. About 33 minutes drive from Skanda Vale.

### FACILITIES:

Self catering 4 star cottages in peaceful, homely location. DVD, CD and WiFi. Dishwasher, washing machine, fridge/ freezer, towels, bedlinen, games, CDs, DVDs, books, gas BBQ and garden furniture. Shared natural wooded grounds, gardens and paddock.

### PRICES:

From £125 for a weekend. Please call for prices.



---

## PANTYSGYFARNOG FARMHOUSE B&B

077888 00210 / [www.web.com](http://www.web.com) / SA33 5DE

---

### LOCATION:

Llangynog. About 30 minutes from Skanda Vale on the A40, between Carmarthen and St Clears.

### FACILITIES:

Can accommodate up to 9 guests.

Recently renovated to a high standard.

3x ensuite 5 star rooms all with TV, towels, free wifi, snacks and drinks.

Toiletries, hairdryers, luxury bedding... too many extras to list.

All rooms are spacious with sitting areas.

Vegetarian breakfast available.

### PRICES:

£40 per guest per night, which includes breakfast or hamper if required.



---

## MILKWOOD CHALET

02920 485866 / 07775 982697 / SA33 5AJ

---

### LOCATION:

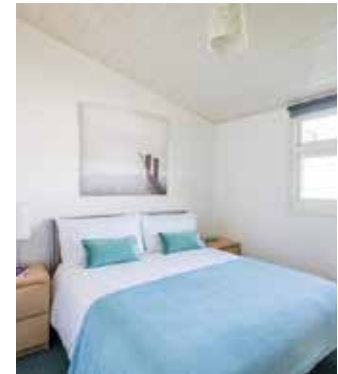
Llangain / Llansteffan. About 33 minutes drive from Skanda Vale.

### FACILITIES:

Self-catering chalet near the sea – sleeps five people. Features open plan lounge / kitchen with cooker, microwave, rice cooker, TV and DVD player. There is one main double bedroom, plus a bedroom with adult size bunk beds and a single bedroom. Parking available.

### PRICES:

3 days from £200 for up to 5 people. There is an extra charge for bed linen, or bring your own if you prefer.



---

## FERRYSIDE FARM

07817 718445 / [www.ferrysidefarm.co.uk](http://www.ferrysidefarm.co.uk) / SA17 5TN

---

### LOCATION:

Ferryside Farm, Ferryside (with sea views).  
22 miles, or a 45 minute drive.

### FACILITIES:

This is a four star farm house, able to sleep 6.  
All the rooms in the house are en-suite with  
TV, towels, linen and tea making facilities. A  
light breakfast of tea, coffee, cereals and toast is  
available between 7:30am and 9:00am.

### PRICES:

Single person in a double room £55 per night  
(with or without a light breakfast).  
Two people in a double room £60 per night  
(with or without a light breakfast).



---

## CRYNKA MAWR COTTAGES

[cryngamawrcottages@outlook.com](mailto:cryngamawrcottages@outlook.com) / [www.cryngamawr.com](http://www.cryngamawr.com) / SA43 2BQ

---

### LOCATION:

Near Aberporth, Cardigan Bay.  
23 miles, or a 49 minute drive.

### FACILITIES:

Sleeps from 2 to 14 guests. Crynga Mawr Mill is a beautiful old mill that has been lovingly transformed into three luxury holiday cottages with seven bedrooms and five bathrooms that can be booked together or individually. The mill is set on a historic farm, situated only five minutes from Aberporth Beach and ten minutes from Cardigan.

### PRICES:

From £65 per night, based on one bedroom cottage for two nights.



---

## PENLAN FACH FARM

01558 685901 / SA19 7YN

---

### **LOCATION:**

Llandeilo. About 51 minutes drive from Skanda Vale.

### **FACILITIES:**

Open plan accommodation, featuring large living/dining area with leather sofas and log burner. Fully equipped kitchen and shower room. Large bedroom situated on the mezzanine floor – sleeps two people in a double bed. Towels and wi-fi included.

### **PRICES:**

Daily: from £80

Weekly: from £450

Monthly: from £1,200



---

## COASTAL PARK HOTEL

01554 583249 / [COASTALPARKHOTEL.COM](http://COASTALPARKHOTEL.COM) / SA15 2TH

---

### LOCATION:

Llanelli, approx. 25 miles (55 minutes)  
from Skanda Vale.

### FACILITIES:

20 en-suite rooms with smart TV.  
Guest toiletries and tea / coffee.  
Accessible ground floor rooms available –  
wheelchair friendly.  
Free Wi-Fi.  
Free parking for cars & minibuses.  
Vegetarian meals on request.  
Group-friendly accommodation.

### PRICES:

Prices available on request. Please quote  
'PILGRIM' for discounted rates. For bookings,  
email: [reception@coastalparkhotel.co.uk](mailto:reception@coastalparkhotel.co.uk)

